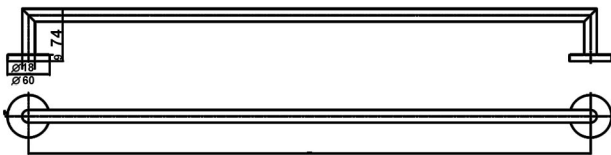


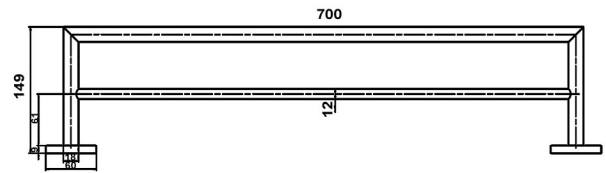
Design Serie

10801 A / B / C / D



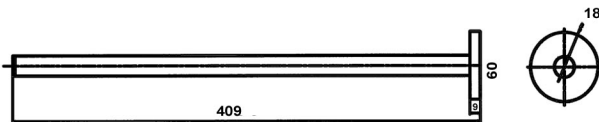
Badetuchhalter lieferbar in 4 verschiedenen Längen
A = 80 / B = 60 / C = 45 / D = 30 cm

10802 B



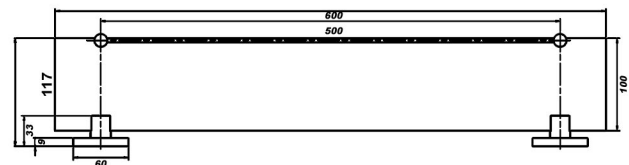
Doppel - Badetuchhalter 70 cm

10805 A



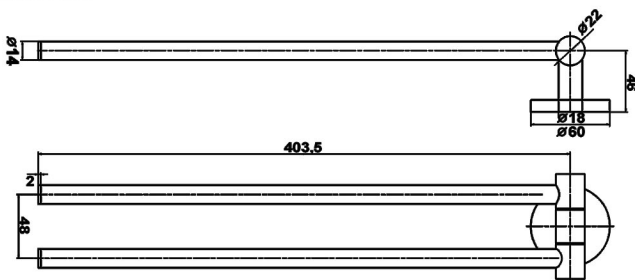
Handtuchhalter / 1 Arm (fest montiert)

10851 A



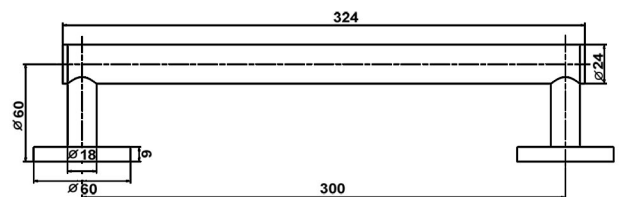
Glasablage mit Reling 70 cm (satiniertes Glas)

10808



Handtuchhalter / 2 Arm (schwenkbare Arme)

10856

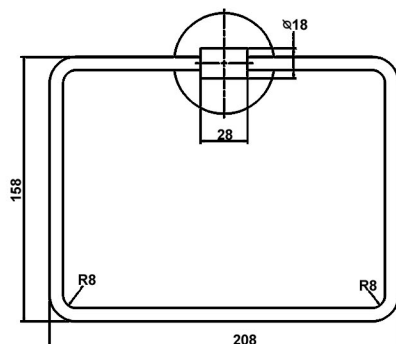


Starre Montageplatte aus Edelstahl
mit 3 Befestigungspunkten
und Aussengewinde abnehmbare Rosette



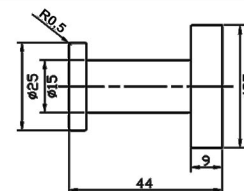
Wannengriff

10838



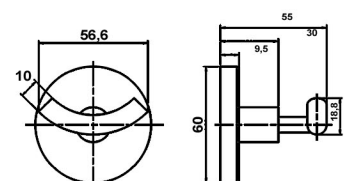
Handtuchring (beweglicher Ring)

10831



Haken (Kopf schraubbar)

10832 A



Doppel - Haken